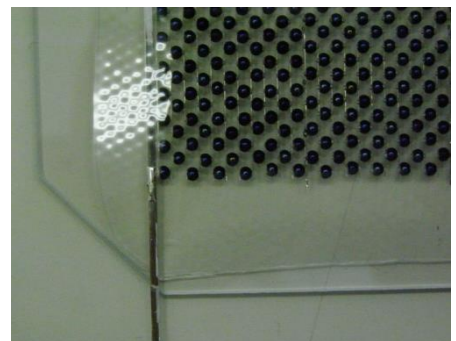


## 1. Abstract

- SPHELAR® module for SPHELAR® Glass Block.
- The solar cell module in which the SPHELAR® cell array is laminated and fixed on a thin plate glass with a shield film.

## 2. Mechanical data

- 1) Module size (L×W×H) L127×W127×H3mm
- 2) Weight 100g
- 3) SPHELAR® module configuration
  - Cell size  $\phi$ 1.5mm
  - Cell counts/block 2,178 pieces
- 4) Heatproof temperature 110°C
- 5) Aperture ratio 45.8%



## 3. Electrical performance

Output characteristics under standard conditions

(AM1.5, 1,000W / m<sup>2</sup>, ambient temperature 25 °C, backside non-reflection)

Item	Sign	Min.	Typ.	Max.	Unit
Maximum output	Pmax	255.8	296.8	337.8	mW
Optimal operating current	Ipm	9.86	11.2	12.5	mA
Optimal operating voltage	Vpm	25.7	26.6	27.5	V
Short current	Isc	11.3	12.7	14.2	mA
Open voltage	Voc	33.5	34.2	35.0	V

### Remark

Specifications are subject to change without notice.

## Contacts:

93 Chudoji Awata-cho Shimogyo-ku Kyoto 600-8815 Japan  
Tel. +81-75-874-1474 / Fax. +81-75-874-1476

Copyright ©2021 Sphehar Power Corporation All Rights Reserved.  
Sphehar® is a registered trademark of Sphehar Power Corporation.

<http://www.sphelarpower.com/>